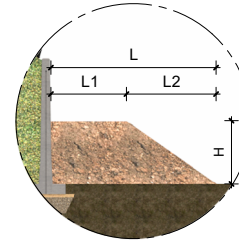
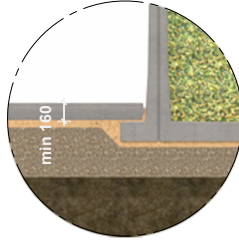
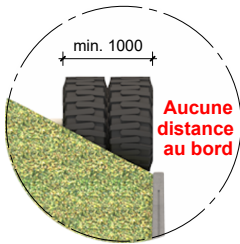
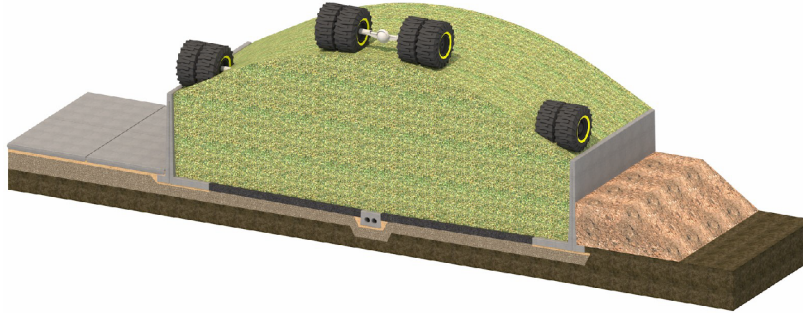


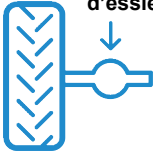
Applications

Murs de soutènement LA (agricole)



a.d.d. talon:	au-dessus du talon
J.d.d. talon:	jusqu'au dessus du talon
A.E.:	Aucune exigence

10T de charges d'essieu



LA200S
LA250S
LA300S

Addition autoportante

Non pavé

600mm a.d.d. talon
750mm a.d.d. talon
750mm a.d.d. talon

Pavé

160mm a.d.d. talon
160mm a.d.d. talon
160mm a.d.d. talon

Addition mur de terre

L

3250mm
3750mm
4250mm

L1

1500mm
1500mm
1500mm

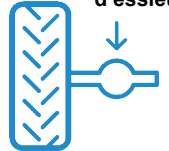
L2

1750mm
2250mm
2750mm

H

1000mm
1250mm
1500mm

15T de charges d'essieu



LA150G
LA175G

400mm a.d.d. talon
400mm a.d.d. talon

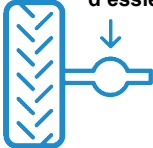
3000mm
3000mm

1500mm
1500mm

1500mm
1500mm

750mm
875mm

15T de charges d'essieu



LA200G
LA250G
LA300G
LA350G
LA400G

500mm a.d.d. talon
550mm a.d.d. talon
600mm a.d.d. talon
450mm a.d.d. talon
600mm a.d.d. talon

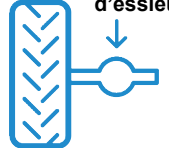
3300mm
3700mm
4100mm
4500mm
5000mm

1500mm
1500mm
1500mm
1500mm
1500mm

1800mm
2200mm
2600mm
3000mm
3500mm

1000mm
1250mm
1500mm
1750mm
2000mm

20T de charges d'essieu



LA300H
LA350H

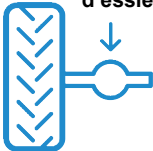
230mm j.d.d. talon
230mm j.d.d. talon

160mm j.d.d. talon
160mm j.d.d. talon

A.E.
A.E.

SO (sans objet)

20T de charges d'essieu



LA100V
LA125V
LA150V
LA175V
LA200V
LA250V
LA300V
LA400V

160mm j.d.d. talon
160mm j.d.d. talon
160mm j.d.d. talon
160mm j.d.d. talon
160mm j.d.d. talon
200mm a.d.d. talon
300mm a.d.d. talon
300mm a.d.d. talon

A.E.
A.E.
A.E.
A.E.
A.E.
A.E.
A.E.
A.E.

Autres application/charges sur demande

<p>Max. 28°</p>	<p>Max. silage height panel height + 0.5m</p>	<p>Dry matter content</p> <p>min. 33%</p> <p>min. 25%</p>	<p>Store silage at max. 800kg per m³</p>	<p>This silage clamp complies with:</p> <ul style="list-style-type: none"> BS 5502-22 Agricultural building and structures BRL 2812 Agricultural concrete products BS EN 13369 Precast concrete products
<p>D: Füllgutklassen 1 u. 2a nach DIN 11622-2</p>				

Les applications présentées sont basées sur la norme néerlandaise, qui peut varier d'un pays à l'autre. Cela pourrait avoir une incidence sur la solution souhaitée.